



J. Dallas Dort Music Center
1025 E Kearsley Street, Flint, MI 48503
(810) 238-1350 | thefim.org

Third Trumpet Audition Repertoire

• **Solo:** Haydn or Hummel Concerto

• **Orchestra excerpts:**

Mussorgsky *Pictures at an Exhibition*

Bizet *Carmen*

Stravinsky *Petrouchka*

Beethoven *Leonore Overture No 3*

Ravel *Piano Concerto in G*

Respighi *Pines of Rome*

R. Strauss *Ein Heldenleben*

Tableaux D'une Exposition

(Excerpt)

M. P. MOUSSORGSKY

PET in C

Allegro giusto



Carmen

Georges Bizet

N° 1. Prélude.

(Prelude to Act I)

in A.

Andante moderato. (♩ = 58.)



Stravinsky - Petrouchka

17 *subito* ♩ = 46 69 *Allegro* ♩ = 116

Pist. *I Solo*

mf 3 *mf* 3

70

BEETHOVEN Leonore Overture #3 (in B-flat)

Solo
in der Entfernung blasen

Tempo I
16

in der Nähe blasen

275

296

Piano Concerto*

MAURICE RAVEL

Allegramente $\text{♩} = 116$



Presto
2 levare la Sord.

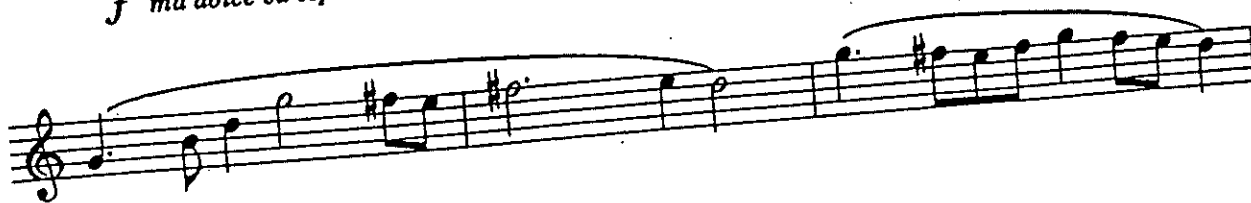


Pini Di Roma

II. I Pini presso una catacomba

O. Respighi

Più Mosso $\text{♩} = 60$ in C
(il più lontano possibile)



R. STRAUSS
Ein Heldenleben (in E-flat)

49 4 **Festes Zeitmass.**
(sehr lebhaft.)
ff *tr. Trompet*



molto marcato
ff

sempre ff 50

51

52

53 7

dim. p

54

55



56

57

58

59

60

61

62

63

64

65

66

ff



80 (in E) 81 *heroisch*

7 *mf* 82 *dim* *scor* *p* *sf* 183 *fp* *fp*

This block contains the first system of music, spanning measures 80 to 183. It consists of three staves. The first staff begins with measure 80, marked '(in E) 81 heroisch' and 'mf'. A large slur covers measures 80 through 82. Measure 82 is marked 'dim' and 'scor'. The second staff continues the melody, with measure 82 marked 'p' and 'sf'. The third staff contains measures 183 and 184, both marked 'fp'.

84 *Hestlig bewegt.* 5 95 *mf* *sf*

As 1. tempo *sf* *mf* *sf* *sf* *sf*

96 3 *stop up* 2 97 1

98 *beinahe doppelt so langsam.* *ff* *sf* 4

This block contains the second system of music, spanning measures 84 to 98. It consists of four staves. The first staff starts at measure 84, marked 'Hestlig bewegt.' and 'mf'. Measure 95 is marked 'sf'. A handwritten note 'As 1. tempo' is written above the staff. The second staff continues the melody, with measures 96 and 97 marked 'sf'. The third staff contains measures 96, 97, and 98, with measure 97 marked 'sf'. The fourth staff contains measure 98, marked 'beinahe doppelt so langsam.' and 'ff'. A handwritten note 'stop up' is written above the staff.